

ATTACHMENT A

ATTACHMENT A

CITY FARM MASTER PLAN

City Farm Master Plan



Design Elements

- A - Greenhouse facilities and City Farm site office
- B - Large scale soil production
- C - New swales and water management
- D - Fowl and bug houses
- E - Organic cropping area
- F - Outdoor education/community event area
- G - Outdoor cooking facilities/kitchen garden
- H - Composting/worm farm facilities
- I - Primary orchards
- J - Secondary orchard/grove planting
- K - Revegetation/habitat planting
- L - Lawn
- M - Council depot
- N - Pathway

Design Materials



1. No dig gardens. Geo fabric sock edging



2. Steel edging



3. Crushed Sandstone - Paved Surface



4. Recycled brick paving



5. Bee & bug accomadation



6. Fowl house + yard



7. Naturalistic fencing



8. Path hierarchy allowing discovery - Recycled

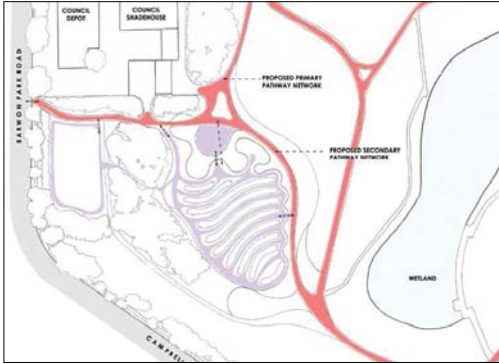


9. Worm farms & composting



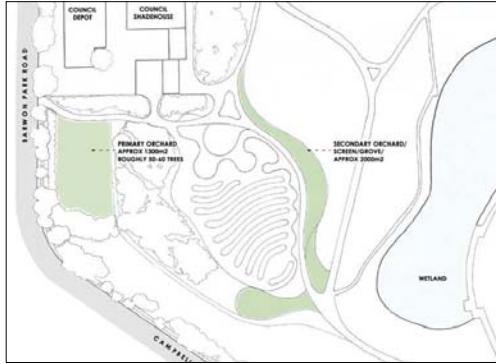
10. Providing habitat to re introduce local fauna.

Key Moves + Design Language



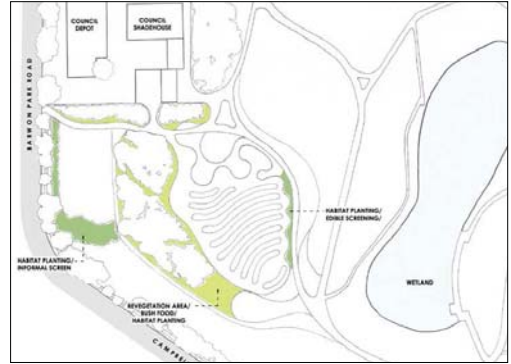
1. Moving around

Pathways have been designed to encourage interaction and participation among people using the farm.



2. Orchard

Orchard trees are an opportunity to grow seasonal produce and contribute to sustainable food production.



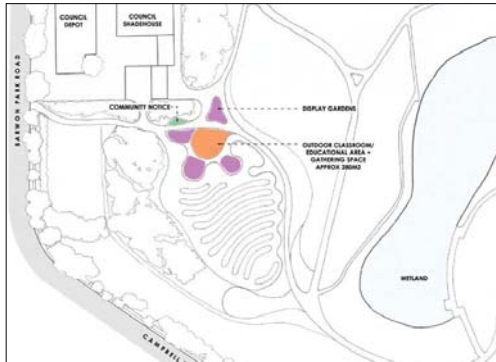
3. Plants and Trees

City Farm will have a variety of plants, including native species, to maintain community interest and showcase what is not normally found at home.



4. Growing food produce

This space to grow food like vegetables will contribute to a crop yield as part of sustainable food production.



5. Sharing knowledge and ideas

The design has spaces for learning and is designed to enhance the practice of skills and knowledge.



6. Kitchen garden and compost

The kitchen garden will be used for teaching organic food preparation and cooking classes. Composting will be an important activity at the farm and a way to contribute to sustainable waste management.



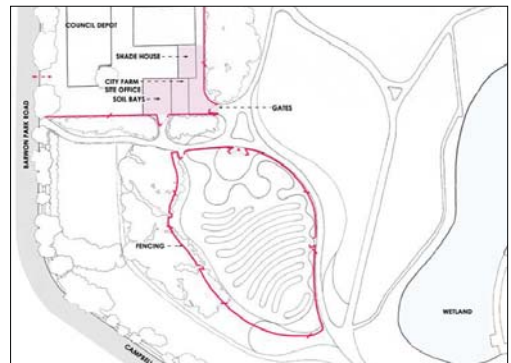
7. Chickens and bees

There will be opportunities to learn about farming practices from a bee farm and chickens. Bees will also play a vital role in the production of food, because they pollinate the plants so that they can produce crops.



8. How water will drain under the farm

The farm design is sensitive to natural water drainage patterns which will contribute to watering the plants and trees. This contributes to the farm's sustainable design.



9. Education space, maintenance and farm fencing

There will be different places for learning and the practice of farm skills on the site, including a flexible learning space, shaped like a flower. There will be a maintenance building to store equipment needed for the farm. Fencing will provide boundaries to some areas.

